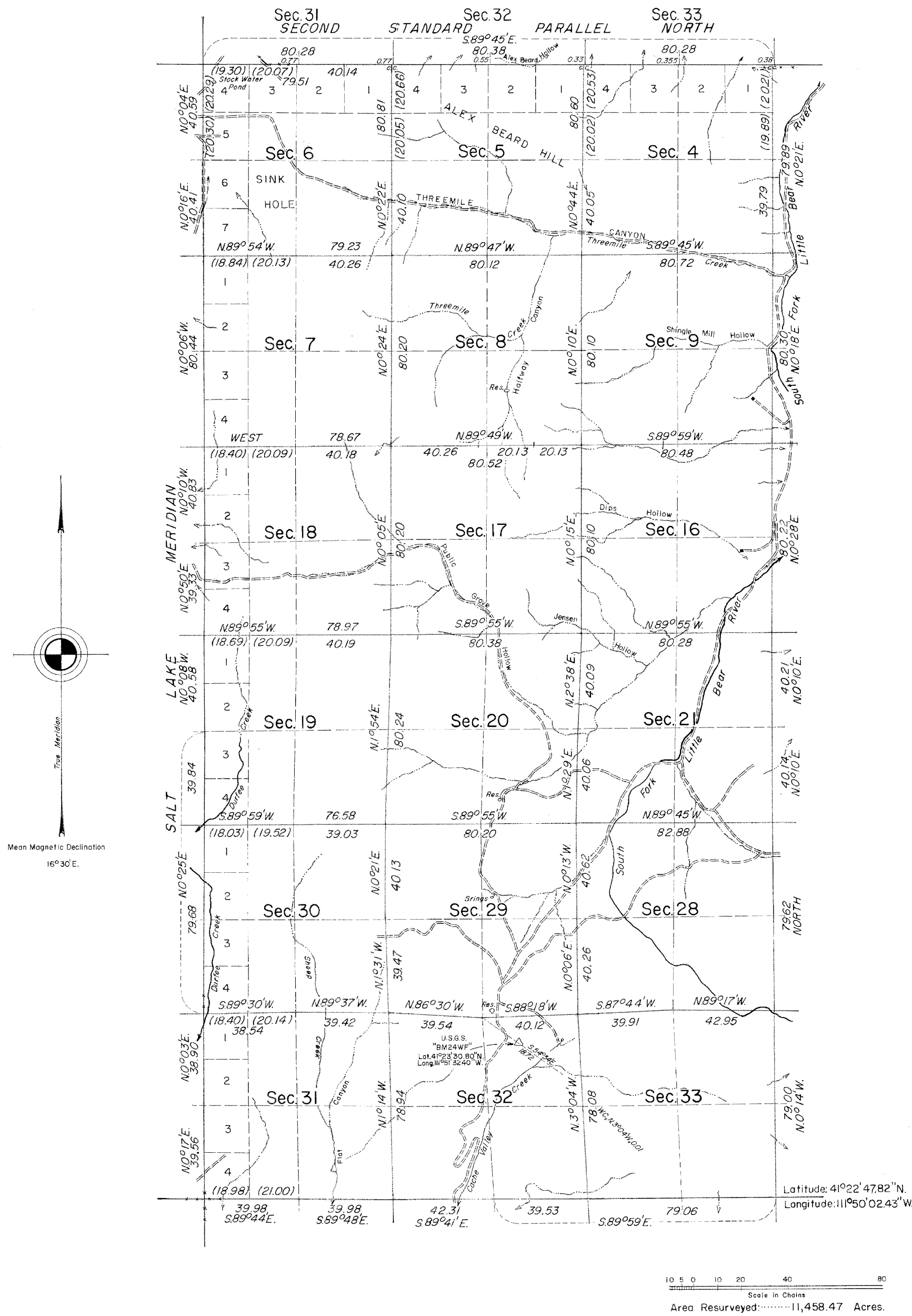


TOWNSHIP 8 NORTH, RANGE 1 EAST, OF THE SALT LAKE MERIDIAN, UTAH.

DEPENDENT RESURVEY



History of earlier surveys is contained in the field notes.

This plat represents a retracement and reestablishment of the west boundary, the west three miles of the north boundary (Second Standard Parallel North), the west three miles of the south boundary, and a portion of the subdivisional lines, designed to restore the corners in their true original locations.

Lettings and areas are as shown upon plats approved February 23, 1878, and April 24, 1890.

Survey executed by Fred R. Chappell, Supervisory Cadastral Surveyor, June 7 to September 16, 1966, under Special Instructions dated May 25, 1966, for Group No. 488, Utah.

UNITED STATES DEPARTMENT OF THE INTERIOR
BUREAU OF LAND MANAGEMENT
Washington, D. C. September 24, 1968

This plat is strictly conformable to the approved field notes, and the survey, having been correctly executed in accordance with the requirements of law and the regulations of this Bureau, is hereby accepted.

For the Director

R. E. Brown

Chief, Division of Engineering